

KEY TO IDENTIFYING MASSACHUSETTS TOADS

Bufo sp.

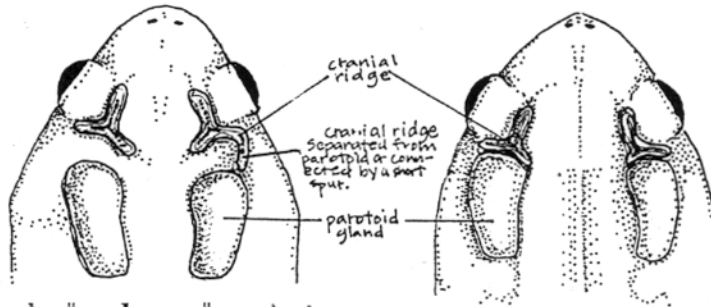
Bufo americanus

- one or two large warts in each of the largest dark spots
- chest and anterior abdomen usually spotted with dark pigment
 - enlarged warts on tibia
- parotoid gland either separated from the cranial ridge or connected by a short spur.
- mid-dorsal stripe may be present.

Bufo woodhousii fowleri

- three or more warts in each of the largest dark spots
- virtually unspotted chest and abdomen
- no greatly enlarged warts on tibia
- parotoid gland touches cranial ridge behind eye
- light mid dorsal stripe

THESE TWO SPECIES HYBRIDIZE REGULARLY IN THE WILD AND TOADS MAY EXHIBIT TRAITS OF BOTH SPECIES



When all else fails, use the "toad score" method...

Scores range from 0 to 4, with 1 through 3 (the grey area) for intermediate approximations.

1) Look at the toad in question and approximate the score for each of the four categories.

a) CRANIAL RIDGE

not touching parotoid

touching parotoid



b) CHEST

heavily spotted

not spotted



c) TIBIAL WARTS

enlarged

not present



d) WARTS/SPOT

Put the number of warts in the largest dorsal spot here: =

grand total from part 1

| |
|-------|
| _____ |
|-------|

2) Plot the total score from part one on this graph:

